



Washington Butterfly Association

wbutterflyassoc@earthlink.net
www.naba.org/chapters/nabaws/

Common Butterflies of the Puget Sound Region and Their Food Plants - By David Droppers

Western Tiger Swallowtail (*Papilio rutulus*). **Identification:** Large. Yellow with black tiger stripes. Underside with some blue. **Flight Period:** mid April – late September, peak in June. **Favorite Nectar Plants:** Mock Orange, Milkweeds, Thistles, large showy flowers. **Larval Host Plants:** Native Willows, Quaking Aspen and other poplars, Red Alder



Anise Swallowtail (*Papilio zelicaon*) **Identification:** Large. Mostly black, centrally yellow, with row of blue dots on hindwing. **Flight Period:** late March – late September, peaks in May, July-August. **Favorite Nectar Plants:** Many flowers, mostly large and showy. **Larval Host Plants:** Garden Parsley and Dill, Angelica, Cow Parsnip, many others.



Purplish Copper (*Lycaena helloides*) **Identification:** Top orange and brown, males with purplish sheen. Bottom tan with red zigzag. **Flight Period:** late April – mid October, peaks in May and August. **Favorite Nectar Plants:** Asters, Pearly Everlasting, Milkweeds, many composites. **Larval Host Plants:** Native and non-native docks and knotweeds.

Pine White (*Neophasia menapia*)

Identification: White with black forewing patch, black veins below. **Flight Period:** late June – early October, peak in August.

Favorite Nectar Plants: Goldenrod, Pearly Everlasting, Asters, Thistles.

Larval Host Plants: Ponderosa Pine, Lodgepole Pine, Douglas-Fir, among other conifers.



Cabbage White (*Pieris rapae*)

Identification: White, black wing tips and spots. Males have one spot, females two spots. **Flight Period:** early March – early November, peaks in May, July and September. **Favorite Nectar Plants:**

Many, especially garden flowers, such as Oregano and Lavender. **Larval Host Plants:** Garden Brassicae, especially broccoli and cabbage.



Cedar Hairstreak (*Mitoura grynea*)

Identification: Small. Varying brown above, below buff brown with violet tint, variable white postmedian line, small tails on hindwings. **Flight Period:** late March – early August, peaks in May-June. **Favorite Nectar Plants:** Goldenrods, Yarrow, Dandelion, Clovers, Red Flowering Currant.

Larval Host Plants: Western Red Cedar, Incense Cedar

Echo (Spring) Azure (*Celastrina echo*)

Identification: Small, males blue, females black and blue. Small gray crescents on ventral hindwing. **Flight Period:** late February – early October, peaks in April and August. **Favorite Nectar Plants:** Red Flowering Currant, Dandelions, Dogwood, early bloomers.

Larval Host Plants: Red Oiser Dogwood, Salal, Ocean Spray

Brown Elfin: (*Incisalia augustinus*)

Identification: Small, brown, base of ventral hindwing mostly black. Males with slight reddish sheen in sun. **Flight Period:** mid March – late July, peak in May. **Favorite Nectar Plants:** Many of the larval host plants, other early blooming flowers. **Laval Host Plants:** Kinnickinnick, Ocean Spray, Salal

Mourning Cloak (*Nymphalis antiopa*)

Identification: Unmistakable. Warm plum/brown, yellow fringe with blue spots. **Flight Period:** mid February – mid October, peaks in April, June, September. **Favorite Nectar Plants:** Red Flowering Currant, Asters, rotting fruit, tree sap. **Larval Host Plants:** Native willows, Poplars

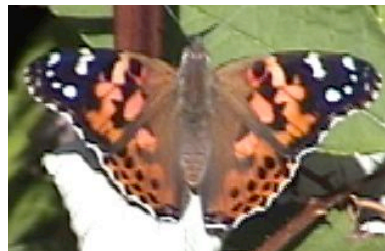


Mylitta Crescent (*Phyciodes mylitta*)

Identification: Small, top mottled black and orange, bottom brown and cream. **Flight Period:** mid March – mid October, peaks in May and July-August. **Favorite Nectar Plants:** Thistles, other composite flowers. **Laval Host Plants:** Canada Thistles, other native thistles

Painted Lady (*Vanessa cardui*)

Identification: 3 inches, mottled orange and black, with white forewing bar. Four eyespots below. **Flight Period:** early April – early November, peaks in May, July, September. **Favorite Nectar Plants:** Summer-blooming composite flowers



Larval Host Plants: Thistles, Mallows, Pearly Everlasting

West Coast Lady (*Vanessa annabella*)

Identification: Like the Painted Lady, but with squared wing tips, orange forewing bar and blue spots on hindwings. **Flight Period:** early March – mid November, peaks in May, August and October **Favorite Nectar Plants:** Composites, Asters, Goldenrod, Dogbane. **Laval Host Plants:** Mallows, Nettles, and Hollyhocks

Red Admirable (*Vanessa atalanta*)

Identification: Brown base, broad red bands. Unmistakable in the Puget Sound region. **Flight Period:** late March – late October, peaks in July and September. **Favorite Nectar Plants:** Composite flowers, rotting fruit and tree sap. **Larval Host Plants:** Stinging Nettles



Lorquin's Admiral (*Limenitis lorquini*)

Identification: Unmistakable. Large, black with white bands and orange wing tips. **Flight Period:** mid February – early October, peaks in June-August. **Favorite Nectar Plants:** Larger flowers or spikes of tiny flowers, although not always common at flowers.



Larval Host Plants: Native Willows, Poplars, Ocean Spray

Woodland Skipper (*Ochlodes sylvanoides*)

Identification: Small, orange brown, yellow submarginal band "breaks." **Flight Period:** mid June – early October, peak in August **Favorite Nectar Plants:** Just about any flower that offers nectar. **Larval Host Plants:** Native and non-native grasses

